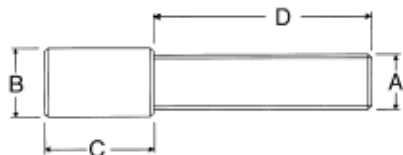


## Precision Stainless Steel Thumb Screws

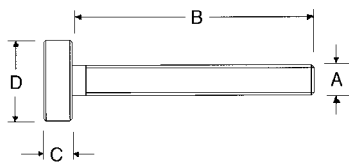


- Made from 303 stainless steel
- Diamond knurl on head
- Longer head length than standard thumb screw
- Inch and metric sizes available

PART #	METRIC			
	A	D	B	C
4501	M3.5 x .6	19mm	4.8mm	9.5mm
4502	M3.5 x .6	25	4.8	9.5
4503	M3.5 x .6	31	4.8	9.5
4504	M4 x .7	19	4.8	9.5
4505	M4 x .7	25	4.8	9.5
4506	M4 x .7	31	4.8	9.5
4507	M5 x .8	19	6.4	12.7
4508	M5 x .8	25	6.4	12.7
4509	M5 x .8	31	6.4	12.7
4510	M6 x 1.0	19	8	12.7
4511	M6 x 1.0	25	8	12.7
4512	M6 x 1.0	31	8	12.7

PART #	INCH			
	A	D	B	C
4520	#4-40	5/8	3/16	3/8
4118	#4-40	1"	3/16	3/8
4521	#6-32	3/8	3/16	3/8
4522	#6-32	5/8	3/16	3/8
4120	#6-32	3/4	3/16	3/8
4122	#6-32	1"	3/16	3/8
4125	#6-32	1-1/4	3/16	3/8
4523	#8-32	3/8	3/16	3/8
4219	#8-32	1/2	3/16	3/8
4220	#8-32	3/4	3/16	3/8
4228	#8-32	1"	3/16	3/8
4231	#8-32	1-1/4	3/16	3/8
4310	#10-24	1/2	1/4	1/2
4311	#10-24	3/4	1/4	1/2
4326	#10-24	1"	1/4	1/2
4327	#10-24	1-1/4	1/4	1/2
4359	#10-32	1/2	1/4	1/2
4360	#10-32	3/4	1/4	1/2
4374	#10-32	1"	1/4	1/2
4375	#10-32	1-1/4	1/4	1/2
4410	1/4-20	1/2	5/16	1/2
4411	1/4-20	3/4	5/16	1/2
4413	1/4-20	1"	5/16	1/2
4524	1/4-20	1-1/4	5/16	1/2
4436	1/4-20	1-1/2	5/16	1/2
4417	5/16-18	1/2	3/8	5/8
4438	5/16-18	1	3/8	5/8
4419	5/16-18	1-1/2	3/8	5/8

## Long Style Thumb Screws



- Available in carbon steel (black oxide finish), or 300 series stainless steel
- Long style thread, diamond knurl head

Steel	Stainless Steel	A Thread	B	C	D
PART #	PART #				
4064	-	#10-32	1/2	3/16	5/8
4065	-	#10-32	3/4	3/16	5/8
4066	-	#10-32	1"	3/16	3/8
4010	4010-SS	#10-32	1-1/2	3/16	5/8
4011	4011-SS	#10-32	2	3/16	5/8
4012	4012-SS	#10-24	1-1/2	3/16	5/8
4013	4013-SS	#10-24	2	3/16	5/8
4067	-	1/4-20	1/2	7/32	11/16
4068	-	1/4-20	3/4	7/32	11/16
4069	-	1/4-20	1"	7/32	11/16
4014	4014-SS	1/4-20	1-1/2	7/32	11/16
4015	4015-SS	1/4-20	2-1/2	7/32	11/16
4031	4031-SS	5/16-18	1	1/4	3/4
4032	4032-SS	5/16-18	1-1/2	1/4	3/4
4016	4016-SS	5/16-18	1-3/4	1/4	3/4
4017	4017-SS	5/16-18	2-1/4	1/4	3/4
4018	4018-SS	5/16-18	3	1/4	3/4
4041	4041-SS	3/8-16	1	5/16	7/8
4042	4042-SS	3/8-16	1-1/2	5/16	7/8
4019	4019-SS	3/8-16	2	5/16	7/8
4020	4020-SS	3/8-16	2-1/2	5/16	7/8
4021	4021-SS	3/8-16	3	5/16	7/8
4051	4051-SS	1/2-13	1-1/2	3/8	1
4052	4052-SS	1/2-13	2	3/8	1
4053	4053-SS	1/2-13	2-1/2	3/8	1
4022	4022-SS	1/2-13	3	3/8	1